

If you would like further information, or request copies of this document in other formats, please visit www.lancashirechildrenstrust.org.uk

Lancashire's Children and Young People's Plan 2011-2014

A Quick Summary

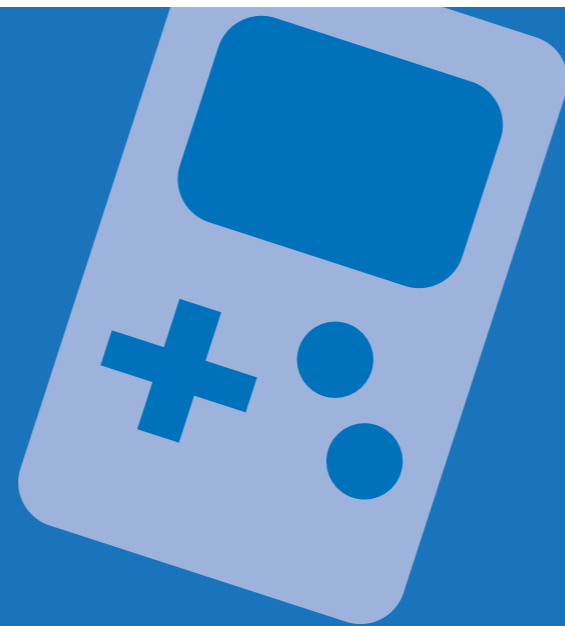


Many thanks to the Young People's Advisory Group- Lucy Sunderland, Sophie Hornby, Andrew Jopson and Katie Brady.

Making a positive difference to the lives of children and young people



Children's Trusts in Lancashire



What's it all about?

All the partners of Lancashire Children's Trust have agreed that we will:

'... work in the best interests of children and young people and their families at all times and make a positive difference to their lives'.

We have agreed to some priorities and targets that we want to achieve over the next three years and how we are going to make them happen. These are outlined in our joint Children and Young People's Plan. This is a summary of the main plan.

What is Lancashire's Children's Trust?

Our Children's Trust is a local partnership which brings together the many organisations across Lancashire responsible for services to children, young people and families so that they can work closely together to improve children's lives.

So ... what is the purpose of the Children and Young People's Plan?

- To confirm the commitment of Lancashire's Children's Trust to improving the lives of children and young people.
- To set out how the Lancashire Children's Trust will make this happen.
- To set out key priorities to be worked on over the next three years.
- To set out how new ways of working together will help make this happen.
- To provide clear arrangements to check that the work is being done effectively.

Who is the Plan for?

- Children and young people aged up to 19 years. In some circumstances, for example, young people leaving care, the age range may be extended.
- The families of those children and young people.
- All those who are responsible for the planning, commissioning and delivery of services for children, young people and their families.



Summary of our priorities

Be Healthy Priority 1:

Lancashire babies are born healthy and have the best possible physical and emotional start in life.

- Improving the health of women prior to and during pregnancy.
- Taking every opportunity in the first year of life to ensure good health and wellbeing over the longer term.

Be Healthy Priority 2:

Children and young people's health and wellbeing is improved through healthy lifestyle choices.

- Developing resilience to risk taking behaviours.
- Improving knowledge, attitudes, behaviours and health literacy to enhance the health and wellbeing of children and young people.
- Ensuring easier access and a smoother, more efficient route through high quality, integrated services that are closer to communities so that health and wellbeing outcomes are improved.

Stay Safe Priority 3:

Children and young people are safe and effectively protected from physical and emotional harm and neglect.

- We will make our county a safer place for children and young people.
- We will improve safeguarding outcomes for all vulnerable children and young people.

Enjoy and Achieve Priority 4:

All of Lancashire's children and young people perform well in education at all stages, regardless of their background or circumstances.

- Raise educational attainment for all children and young people, with a particular focus on vulnerable and disadvantaged groups.
- Reduce school exclusions.
- Improve access to Further Education.

Positive Contribution Priority 5:

Children and young people access and make effective use of a range of positive activities in their spare time.

- Supporting partners to manage, review and maintain a quality range of opportunities for children, young people and families, focusing on the most vulnerable and those from the most disadvantaged backgrounds.

Positive Contribution Priority 6:

All of Lancashire's children and young people make a positive contribution, regardless of their background or circumstances.

- Reduce youth offending.
- Supporting partners to develop and co-ordinate the voice and influence of the children, young people and families who are the most vulnerable in multi-agency service redesign and delivery.

Economic Wellbeing Priority 7:

The impact of family poverty is minimised and young people aspire to contribute to the future economic wellbeing of Lancashire.

- Improve preparation for and access to, learning and work opportunities for all young people.
- Improve the availability of quality affordable housing particularly to help address youth homelessness.
- Improve pathways for parents and carers to skills training and employment.

Economic Wellbeing Priority 8:

Children, young people and their families are enabled to achieve their potential and prosper, regardless of their background or circumstances.

- Enable vulnerable groups and those from the most disadvantaged backgrounds to prosper.
- Enable those who find access to services difficult, including those living in rural isolation, to achieve their potential and prosper.





How will we make it happen?

Everyone agrees that we need to look at new ways of working to make sure things happen in the best way.

How did we decide on what priorities should be included in the Plan?

- Looking at a wide range of information and data around the lives of people living in Lancashire.
- Consultation with Children's Trust partners and a large number organisations and services.
- Listening to what almost 3,500 children and young people in Lancashire have told us about what they feel would improve their lives.
- Listening to what parents and carers have told us about their needs and concerns for their children.

What about local priorities?

Lancashire's twelve District Children's Trust Boards, one in each district council area, will all be playing a major part in delivering services to children and young people.

Each Trust has identified their own specific local priorities to meet the local and more tailored needs of children, young people and their families in their local community.

How will we know that the Plan is being effective?

- Regular feedback will be sought from children, young people and their families, to check that we are making a positive impact on their lives.
- Reporting systems will be in place to ensure all appropriate data is collected and used to inform progress.
- The Children's Trust Board will have overall responsibility for making sure the Plan is delivered.
- Lead officers from partner organisations will be accountable for specific areas of work.
- The Children and Young People's Plan will be reviewed every year and a report on how well we are doing will be published online and available at schools, colleges and Youth Zones across the county.

Want to know more?

Visit our website at:

www.lancashirechildrenstrust.org.uk

